

# Energy Saving Tips

Energy Conversation incentive Scheme for Student Hostels



Turn off the air conditioner before going out



Use energy-efficient light bulbs e.g. LEDs



Clean the lighting fixtures regularly



**Watermelon  
group**

**LOVE  
THE  
EARTH**



# ENERGY

# SAVING TIPS

TIP 1

**Avoid evening cleaning**

**Use natural light instead of artificial lighting**

TIP 3

**Lower the brightness of your computer screen**

WATERMELONGROUP

ENERGY CONSERVATION INCENTIVE SCHEME FOR STUDENT  
HOSTELS

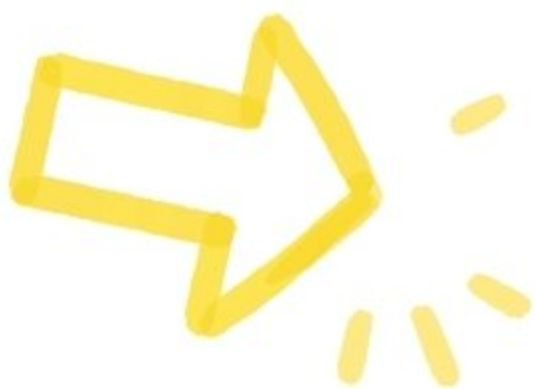
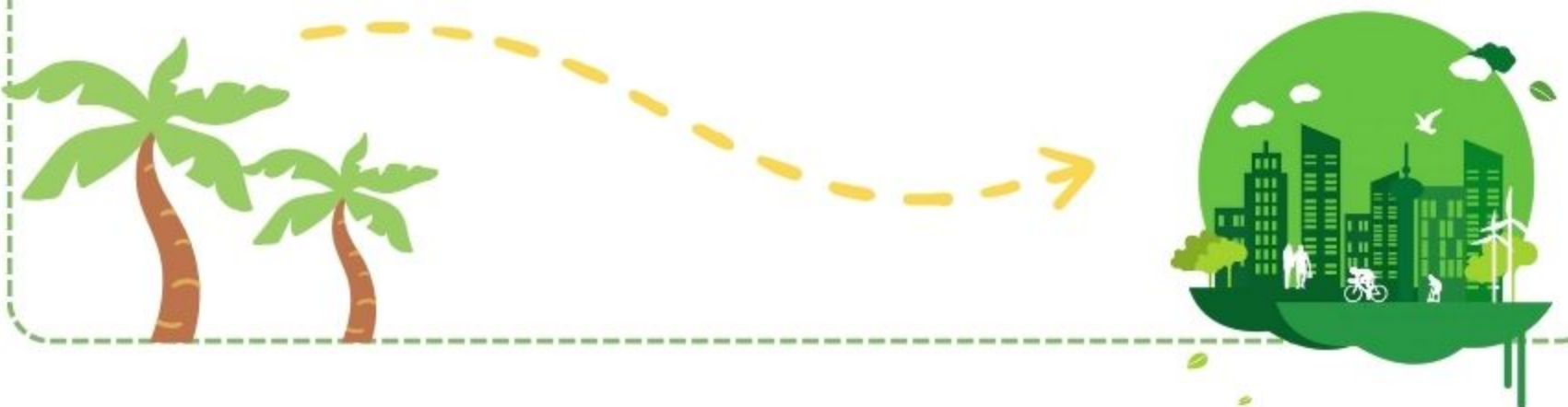


# Energy Saving Tips



## Energy Conservation Incentive Scheme for Student Hostels

- ✓ PROVIDE ON/OFF CONTROLS TO DE-ENERGIZE EQUIPMENT NOT IN USE
- ✓ REDUCE TRANSFORMER LOSSES THROUGH PROPER LOADING AND BALANCING
- ✓ REPLACE OVERSIZED MOTORS



*Watermelon group*



The logo for SHAW is a green, arrow-shaped banner pointing to the right, with the word "SHAW" written in white, uppercase letters. There are small yellow starburst marks at the top and bottom right corners of the banner.

SHAW

# Energy Saving Tips



Install solar shading devices



Use elevators as little as possible



Buy or use less disposable items  
and over-packaged goods

The logo for the Watermelon Group is a white speech bubble with a tail pointing towards the bottom right. Inside the bubble, the words "WATERMELON" and "GROUP" are written in white, uppercase letters. There are three yellow starburst marks to the right of the word "WATERMELON".

WATERMELON  
GROUP

A colorful illustration of a campsite in a valley. In the foreground, there are several tents: a yellow one with a window, a black one, and a large yellow one with a table and chairs underneath. People are sitting and standing around the site. In the background, there are rolling green hills, a small house, and a winding road. The sky is blue with white clouds and a yellow kite flying.

Energy Conversation Incentive  
Scheme for Student Hostels